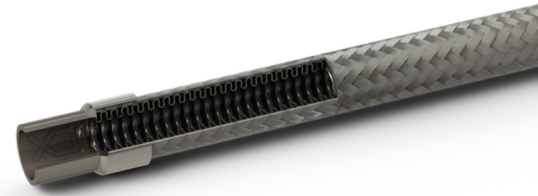


ANACONDA HP



- High performance flexible annularly corrugated stainless steel hose
- For use in high pressure applications
- Hydroformed manufactured with reinforced walls and narrow corrugation
- High leak tightness (max. on demand 1x10⁻⁹ mb l/s)
- Exceptionally good compromise flexibility/ high pressure resistance

CoreDux base hose range									
Nominal Hose Size [mm(in.)]	Hose material*	Braiding*	Hose Inside dia. [mm(in.)]	Hose outside dia. [mm(in.)]	Minimum centre line bend radius		Working pressure** at 70°F (20°C) [bar (psig)]	Minimum Burst Pressure at 70°F (70°F) [bar (psig)]	Temp. Range [°C (°F)]
					Static [mm(in.)]	Dynamic [mm(in.)]			
DN6 1/4"	Stainless	Single	5,9 (0.23)	11,4 (0.45)	25 (0.98)	110 (4.33)	180 (2611)	720 (10443)	-273 (-460) - 550 (932)
DN10 3/8"	Stainless	Single	10 (0.39)	17,8 (0.7)	38 (1.5)	150 (5.91)	145 (2103)	580 (8412)	-273 (-460) - 500 (932)
DN12 1/2"	Stainless	Single	11,8 (0.46)	20,2 (0.8)	45 (1.77)	165 (6.5)	140 (2031)	560 (8122)	-273 (-460) - 500 (932)
DN20 3/4"	Stainless	Single	17,9 (0.7)	29,1 (1.15)	70 (2.76)	225 (8.86)	85 (1233)	340 (4931)	-273 (-460) - 500 (932)
DN25 1"	Stainless	Single	24,2 (0.95)	38 (1.5)	85 (3.35)	215 (8.46)	78 (1131)	312 (4525)	-273 (-460) - 500 (932)
DN32 1 1/4"	Stainless	Single	30,7 (1.21)	46,5 (1.83)	105 (4.13)	300 (11.81)	65 (943)	260 (3771)	-273 (-460) - 500 (932)
DN40 1 1/2"	Stainless	Single	39,3 (1.55)	54,9 (2.16)	130 (5.12)	280 (11.02)	61 (885)	244 (3539)	-273 (-460) - 500 (932)
DN50 2"	Stainless	Single	49 (1.93)	67,3 (2.65)	160 (6.3)	390 (15.35)	55 (798)	220 (3191)	-273 (-460) - 500 (932)
DN65 2 1/2"	Stainless	Single	64 (2.52)	83,9 (3.3)	200 (7.87)	460 (18.11)	52 (754)	204 (2959)	-273 (-460) - 500 (932)
DN80 3"	Stainless	Single	78,7 (3.1)	99 (3.9)	240 (9.45)	660 (25.98)	25 (363)	100 (1450)	-273 (-460) - 500 (932)
DN100 4"	Stainless	Single	101 (3.98)	129,5 (5.1)	290 (11.42)	750 (29.53)	24 (348)	96 (1392)	-273 (-460) - 500 (932)
DN125 5"	Stainless	Single	124 (4.88)	155 (6.1)	350 (13.78)	1000 (39.37)	20 (290)	80 (1160)	-273 (-460) - 500 (932)

*Values based on 316L, different materials available

**Temperature derating factor should apply to working pressure. Based on ISO 10380

ANACONDA THP

CoreDux base hose range									
Nominal Hose Size [mm(in.)]	Hose material	Braiding	Hose Inside dia. [mm (in.)]	Hose outside dia. [mm (in.)]	Minimum centre line bend radius		Working pressure at 70°F (20°C) [bar (psig)]	Minimum Burst Pressure at 70° (70°F) [bar (psig)]	Temp. Range [°F (°C)]
					Static [mm (in.)]	Dynamic [mm (in.)]			
DN6 1/4"	Stainless	Double	5,9 (0.23)	13 (0.51)	25 (0.98)	110 (4.33)	255 (3699)	1020 (14794)	-273 (-460) - 500 (932)
DN10 3/8"	Stainless	Double	10 (0.39)	19,4 (0.76)	38 (1.5)	150 (5.91)	195 (2828)	780 (11313)	-273 (-460) - 500 (932)
DN12 1/2"	Stainless	Double	11,8 (0.46)	21,8 (0.86)	45 (1.77)	165 (6.5)	185 (2683)	740 (10733)	-273 (-460) - 500 (932)
DN20 3/4"	Stainless	Double	17,9 (0.7)	30,7 (1.21)	70 (2.76)	225 (8.86)	125 (1813)	500 (7252)	-273 (-460) - 500 (932)
DN25 1"	Stainless	Double	24,2 (0.95)	40 (1.57)	85 (3.35)	215 (10.24)	124 (1798)	496 (7194)	-273 (-460) - 500 (932)
DN32 1 1/4"	Stainless	Double	30,7 (1.21)	49 (1.93)	105 (4.13)	300 (11.81)	115 (1668)	460 (6672)	-273 (-460) - 500 (932)
DN40 1 1/2"	Stainless	Double	39,3 (1.55)	57,4 (2.26)	130 (5.12)	280 (13.39)	90 (1305)	360 (5221)	-273 (-460) - 500 (932)
DN50 2"	Stainless	Double	49 (1.93)	69,8 (2.75)	160 (6.3)	390 (15.35)	78 (1131)	312 (4525)	-273 (-460) - 500 (932)
DN65 2 1/2"	Stainless	Double	64 (2.52)	86,9 (3.42)	200 (7.87)	460 (18.11)	75 (1088)	300 (4351)	-273 (-460) - 500 (932)
DN80 3"	Stainless	Double	78,7 (3.1)	102 (4.02)	240 (9.45)	660 (25.98)	50 (725)	200 (2901)	-273 (-460) - 500 (932)
DN100 4"	Stainless	Double	101 (3.98)	132,5 (5.22)	290 (11.42)	750 (29.53)	45 (653)	180 (2611)	-273 (-460) - 500 (932)
DN125 5"	Stainless	Double	124 (4.88)	158 (6.22)	350 (13.78)	1000 (39.37)	38 (551)	152 (2205)	-273 (-460) - 500 (932)

*Values based on 316L, different materials available

**Temperature derating factor should apply to working pressure. Based on ISO 10380

ANACONDA XHP

CoreDux base hose range									
Nominal Hose Size [mm(in.)]	Hose material	Braiding	Hose Inside dia. [mm (in.)]	Hose outside dia. [mm (in.)]	Minimum centre line bend radius		Working pressure at 70°F (20°C) [bar (psig)]	Minimum Burst Pressure at 70°F (70°F) [bar (psig)]	Temp. Range [°F (°C)]
					Static [mm (in.)]	Dynamic [mm (in.)]			
DN150 6"	Stainless	Triple	155 (6.1)	188 (7.4)	400 (15.75)	1550 (61.02)	34 (493)	136 (1973)	-273 (-460) - 500 (932)
DN200 7 3/4"	Stainless	Triple	204 (8.03)	253,5 (9.98)	400 (15.75)	2000 (78.74)	30 (435)	120 (1740)	-273 (-460) - 500 (932)

*Values based on 316L, different materials available

**Temperature derating factor should apply to working pressure. Based on ISO 10380

Options on request

- Hose material
- Braid material
- Connections

Compliance

- EN ISO 9001
- EN ISO 10380 / ASME 31.3 / EN 14585

Cleanliness

- Standard deliveries: White room
- High purity: possible upon request

Packaging

- Each hose is bagged individually and boxed. Longer hoses are coiled, bagged and boxed.

Product tests

- Helium leak test (1×10^{-5} std cm³/s)
- Additional options: he leak test 1×10^{-9} std cm³/s